



Acer Aspire One ZG5 RAM Replacement

This guide will show you how to install more RAM.

Written By: Doug Gallatin

INTRODUCTION

After getting the motherboard, it is rather straight forward to get to the RAM.



TOOLS:

- [Phillips #0 Screwdriver](#) (1)
- [Phillips #1 Screwdriver](#) (1)
- [Spudger](#) (1)



PARTS:

- [PC2-5300 512 MB RAM Chip](#) (1)
- [PC2-5300 1 GB RAM Chip](#) (1)

Step 1 — Battery



- Turn the netbook upside down with the battery at the top, away from you.

Step 2



- Unlock the battery by sliding the switch located near the left hinge to the left "unlocked" position.

Step 3



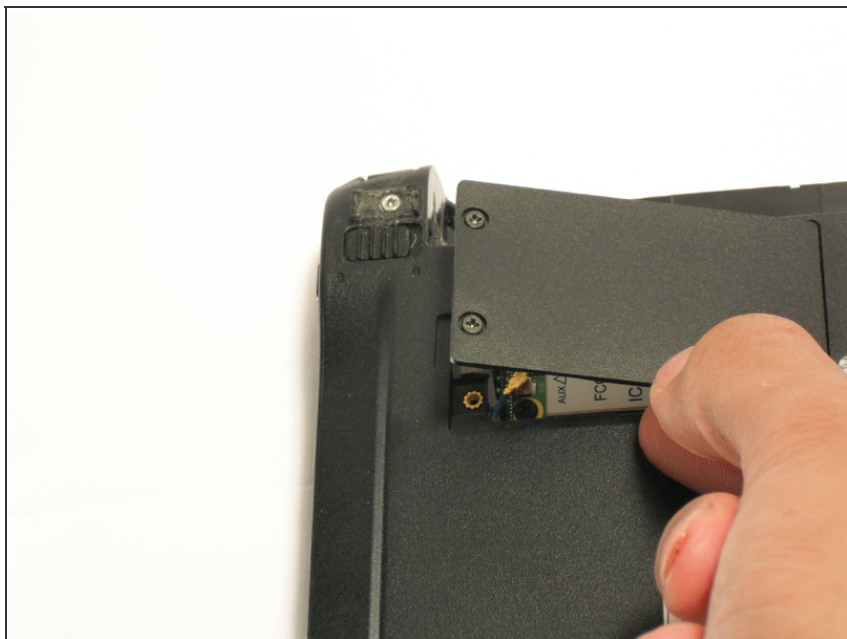
- Slide the latch located on the opposite hinge from the lock while pushing the battery up.

Step 4 — Wireless Card



- Remove the two screws on the small panel towards the top left of the netbook with the Phillips #0 screwdriver.
- ⓘ These screws are built into the panel so they won't come out freely.

Step 5



- Gently lift and remove the plate from the netbook.

Step 6



- Disconnect the two antenna wires attached to the left side of the wireless card.

Step 7



- Remove the 3.9mm screw located on the bottom left of the wireless card with Phillips #1 screwdriver.

Step 8



- Gently lift the wireless card from its housing starting with the side where the antenna wires were.

Step 9 — Keyboard



- Turn the netbook over and open the display so that the keyboard is facing you.

Step 10



- There are three tabs located on the top of the keyboard.
- Start with the spudger pointing towards the display and pry up to push each tab off the keyboard.
- As you move to the next tab, ensure the previous tab doesn't reset itself.

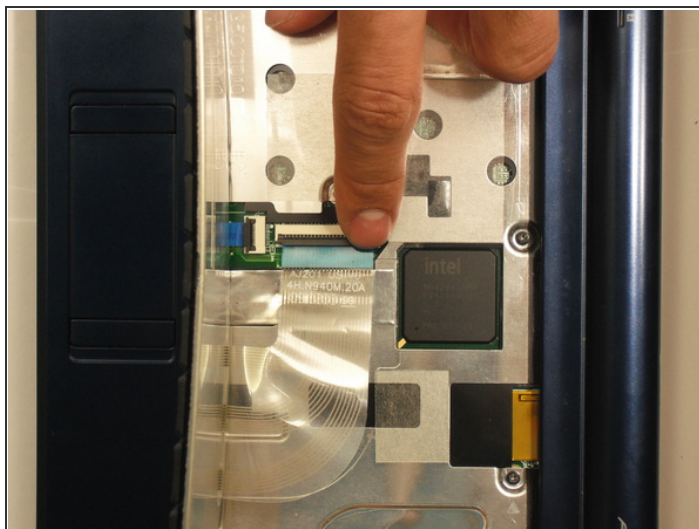
Step 11



- Lift top of keyboard up. If it doesn't lift easily, there may be tabs on the sides - use the tool to ease them aside and/or shift the keyboard from side to side.

⚠ There is a short ribbon cable connecting the keyboard to the netbook.

Step 12



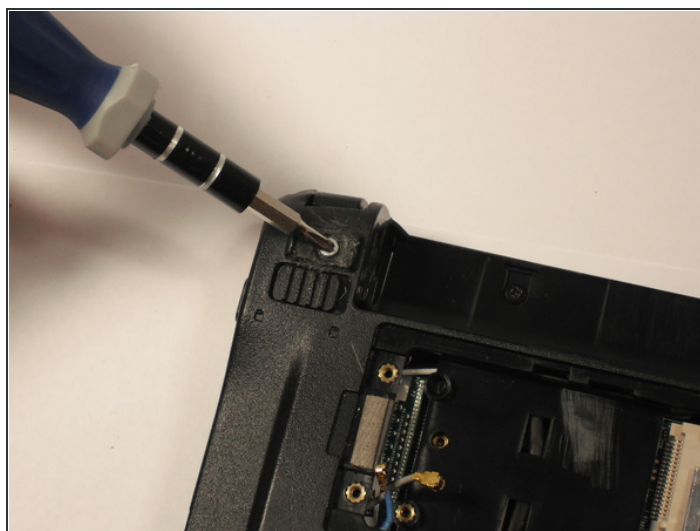
- Disconnect the ribbon by lifting the black plastic hinge and removing the clear blue cable.

Step 13 — Top Case



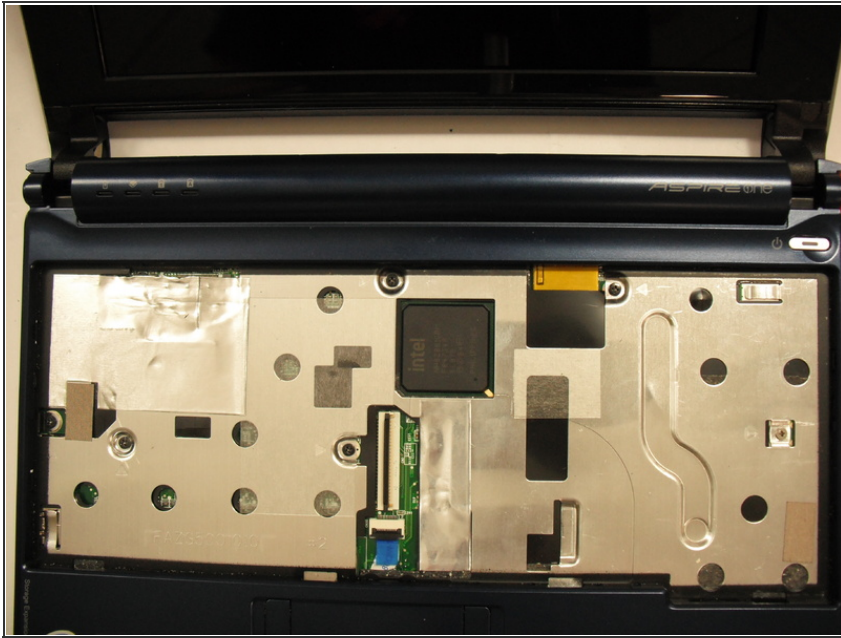
- Close display and turn ZG5 over so that the battery compartment is towards the top.

Step 14



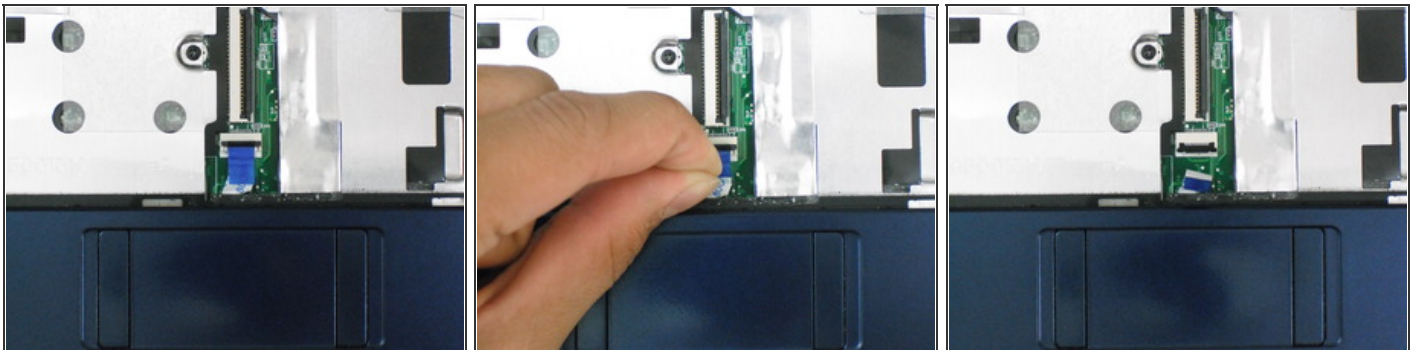
- Remove three 3.9 screws from the netbook with the Phillips #1 screwdriver. Remove the rest of the five screws from the netbook with the Phillips #0 screwdriver
 - Three 5.8mm screw towards the bottom
 - Three 3.9mm screw where the battery was
 - Two 5.8mm screws underneath the rear feet near the hinges.

Step 15



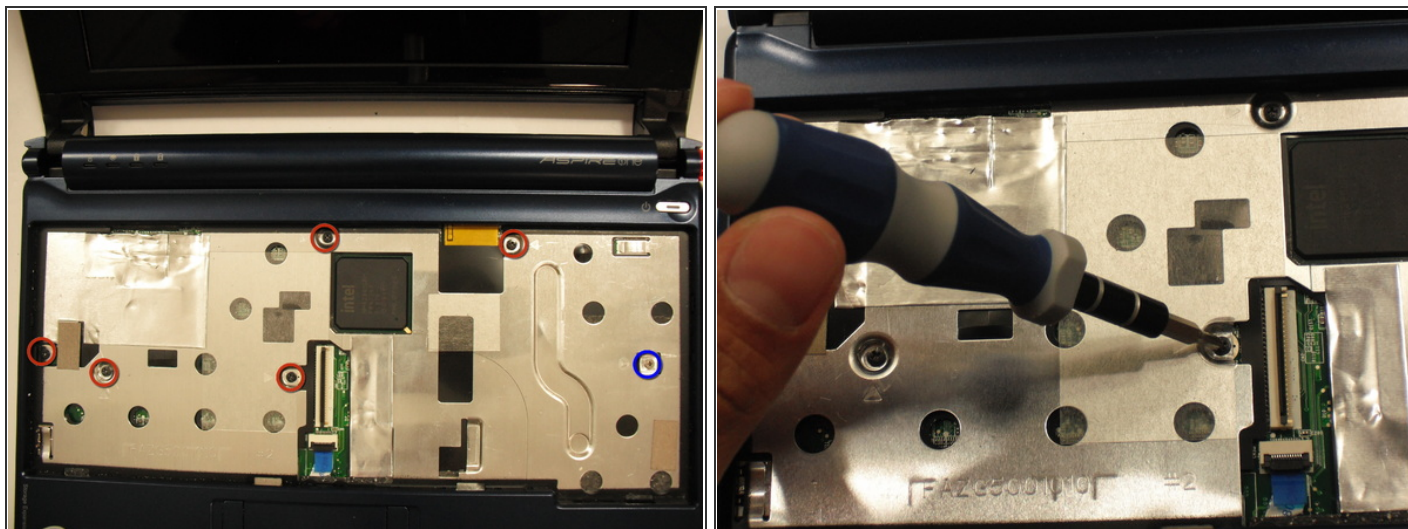
- Turn the netbook back over and open the display with the keyboard cavity facing you.

Step 16



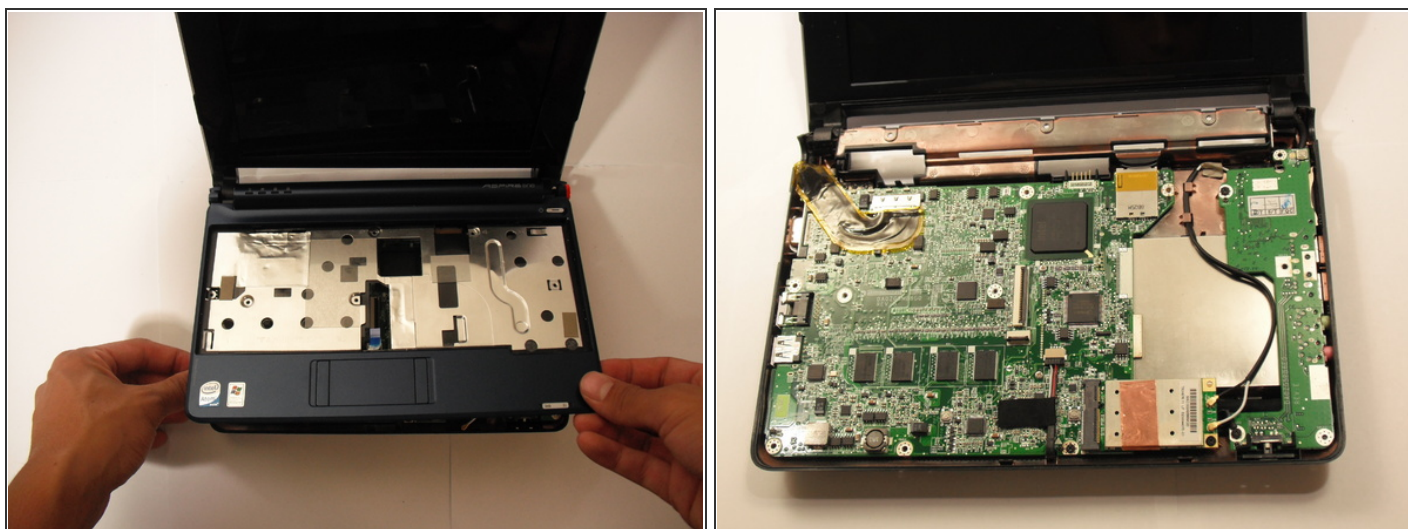
- Gently remove the trackpad cable with the blue tab from the motherboard

Step 17



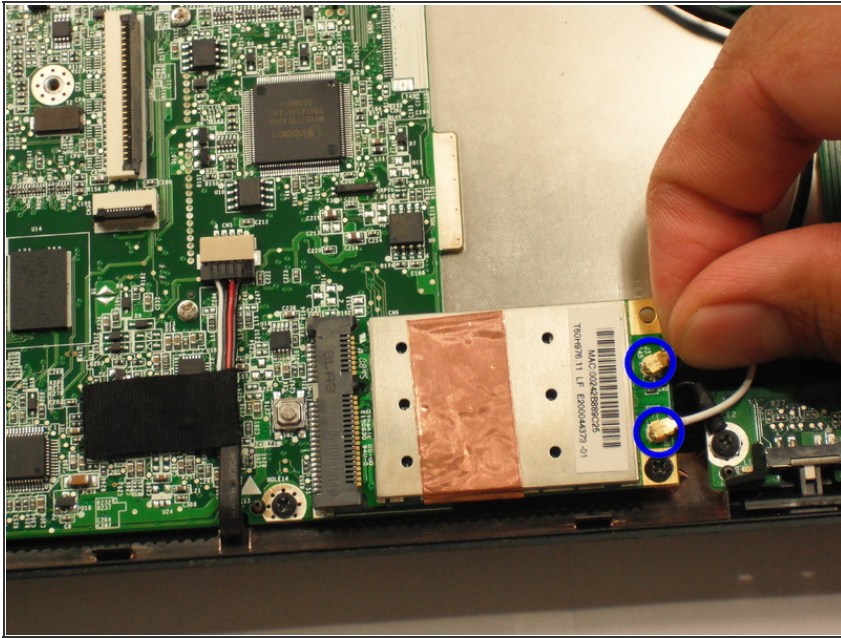
- Remove the six screws from the metal casing using Phillips #0 screwdriver.
 - Five black 4.7mm screws
 - One silver 4.3mm screw on right (you may find a #00 Phillips more appropriate for this screw)

Step 18



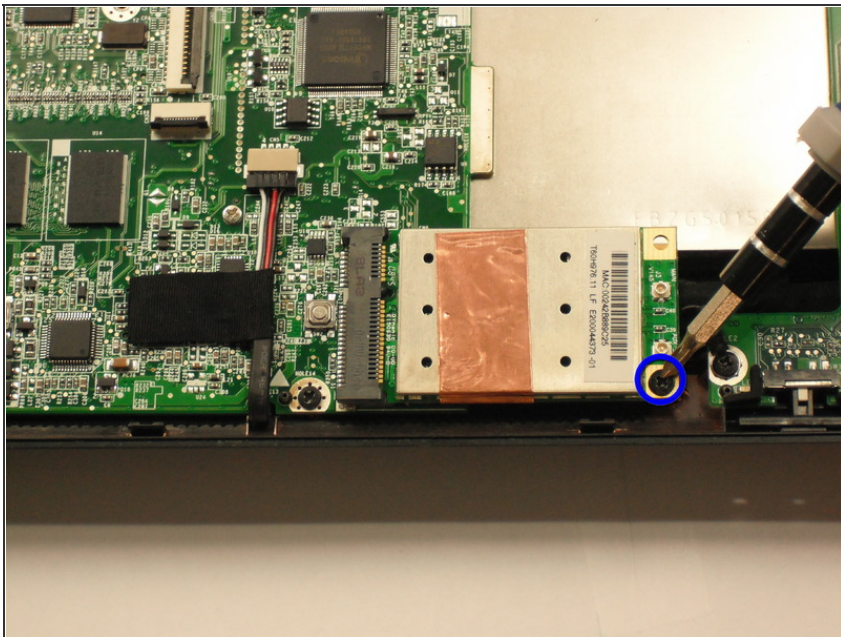
- Gently lift the top case off.
- Using the spudger tool, start at the back (the red rings along the hinge) and slide the tool along the opening toward the front to release the mini clips. Forcing with hands may damage the plastic top.

Step 19 — Internal Wireless Card



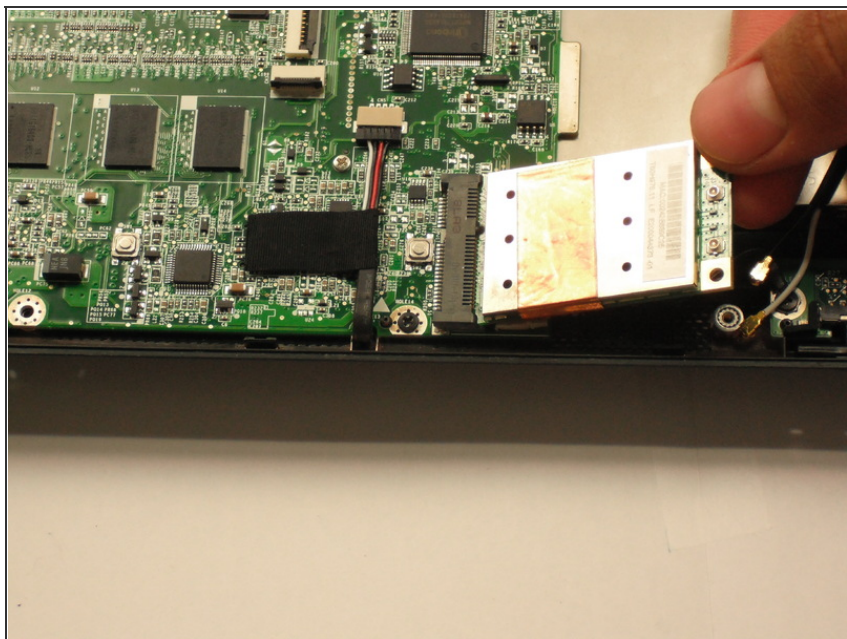
- Disconnect the two antenna cables located on the right of the LAN card.

Step 20



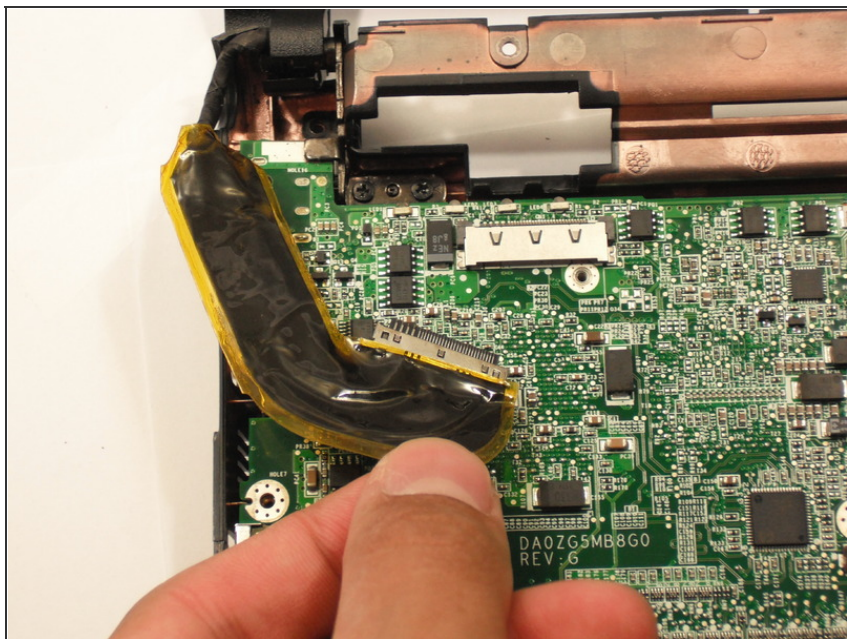
- Remove the the 3.9mm screw from the wifi card using Phillips #1 screwdriver.

Step 21



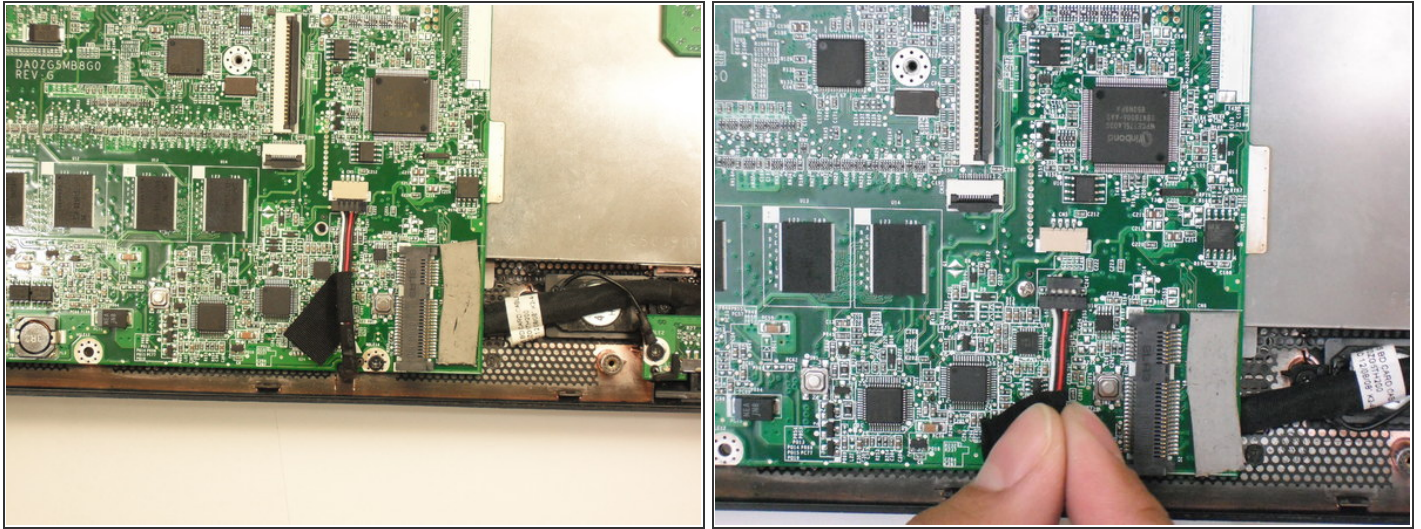
- Gently pull the wifi card to the right and out of its housing.

Step 22 — Motherboard



- Disconnect the display cable located on the top left of the motherboard.

Step 23



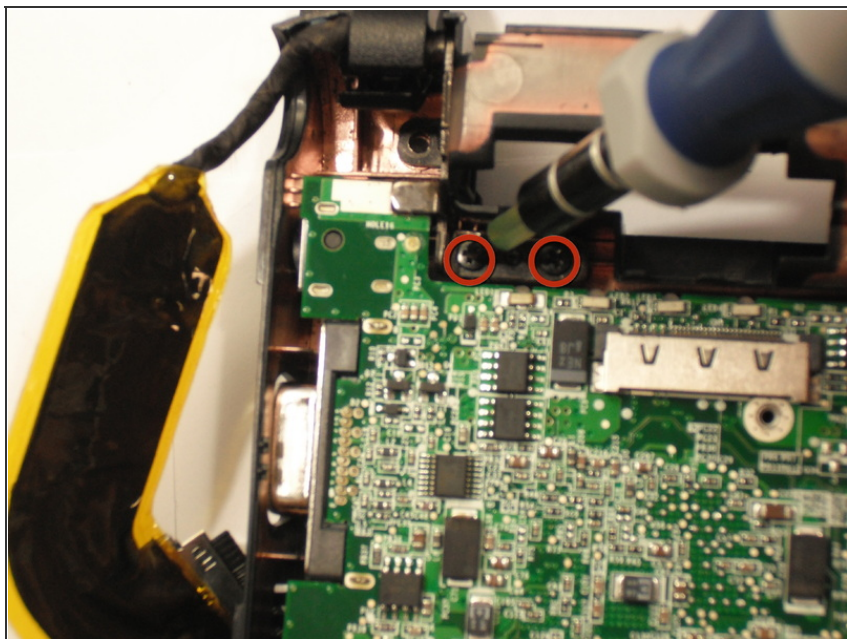
- Remove the speaker cable from the motherboard.

Step 24



- Remove 4 screws:
 - Three 3.9 mm screws using Phillips #1 screwdriver
 - One 3.9 mm (or possibly, in some laptops, 4.7 mm) screw using Phillips #0 screwdriver

Step 25



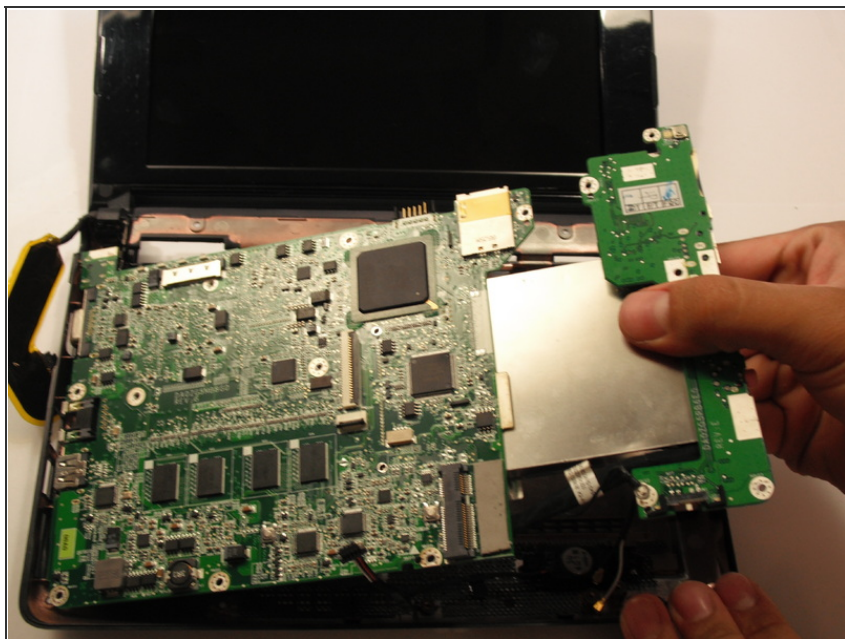
- Using a Phillips #1 screwdriver, remove the two 4.7 mm screws holding the display onto the motherboard. (These are the same type of screws as the five you removed from the metal shield under the keyboard in a previous step.)

Step 26



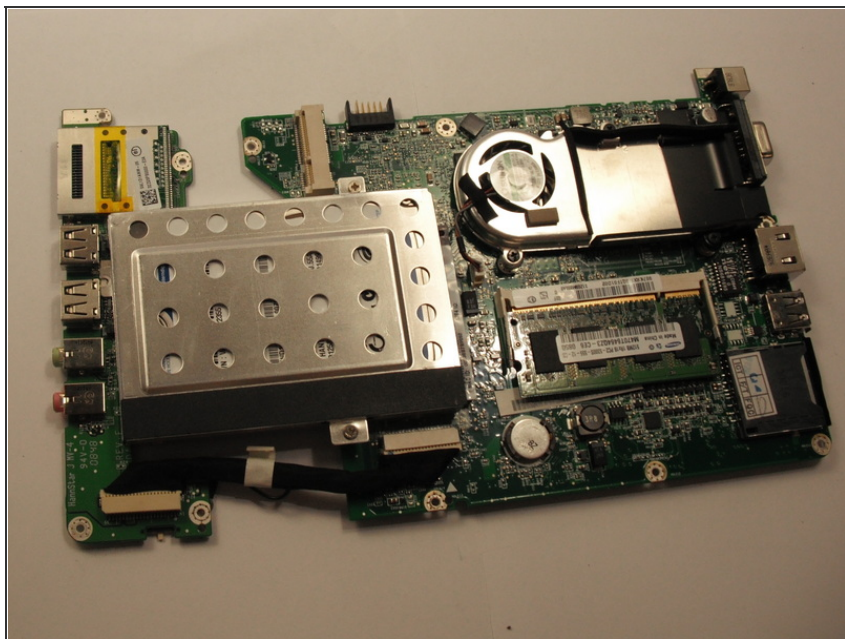
- Lift out the daughter-board on the right of the netbook.
- ⓘ The daughter-board is attached to the motherboard by a short cable.
- Be aware of the ports on the right side of the daughter-board.

Step 27



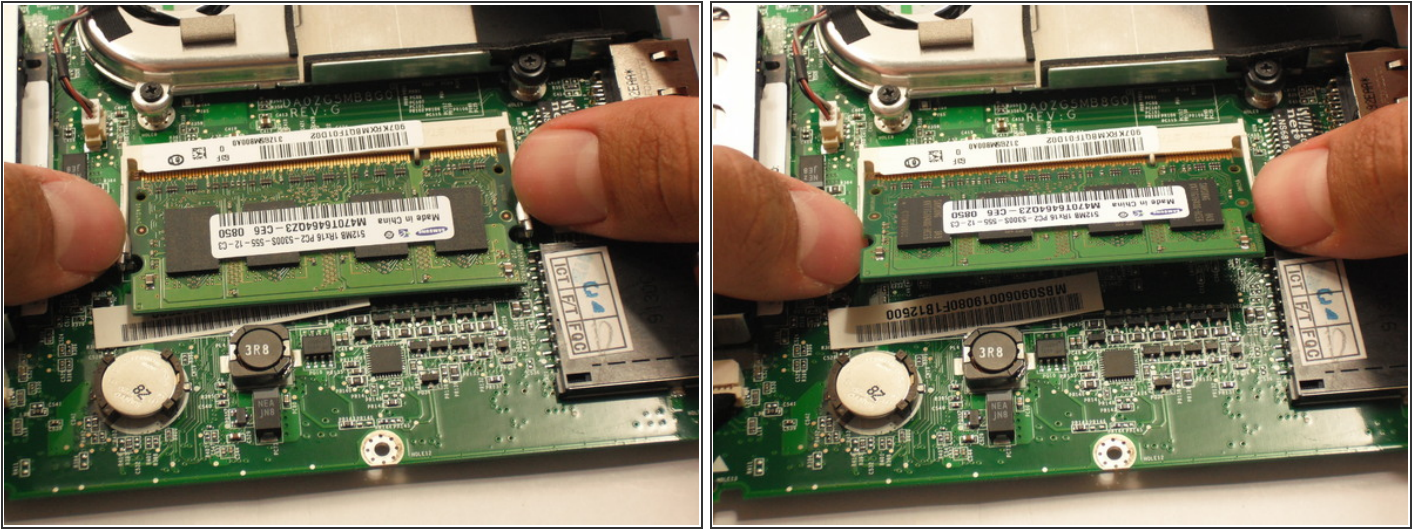
- Pull out the motherboard from its housing.

Step 28 — RAM



- Turn the motherboard over so the RAM is facing up.

Step 29



- Simultaneously release both latches on opposing sides of the RAM.
- The RAM should spring up.

Step 30



- Pull RAM straight out from the slot.

To reassemble your device, follow these instructions in reverse order.

This document was last generated on 2015-05-01 06:35:11 PM.